



54 Lawn Close, Datchet, Slough, SL3 9LA  
£550,000

 **HORLER**

## 54 Lawn Close, Datchet, Slough, SL3 9LA

Tucked away in a peaceful no-through road on Lawn Close, Datchet, this charming three-bedroom family home has been lovingly owned by the same family for over 50 years. Rich in warmth and character, the property now presents a rare and exciting opportunity for prospective buyers.

Offering significant potential to extend (subject to the usual planning permissions), the home is ideal for those looking to create a bespoke living space tailored to their needs. Further enhancing its appeal, the property is offered to the market with no onward chain, ensuring a smooth and straightforward move into your new family home.



### **Property Summary.**

Nestled in the no through road in Lawn Close, Datchet, this charming three-bedroom family home has been cherished by the same family for over 50 years. This property presents a unique opportunity for prospective buyers, as it is offered to the market with no onward chain, allowing for a smooth transition into your new family home.

The house boasts an impressive south-facing garden, nearly 100 feet in length, providing an idyllic outdoor space perfect for family gatherings, gardening enthusiasts, or simply enjoying the sunshine. The garden's size and orientation offer a wonderful canvas for those looking to create their own outdoor sanctuary.

Additionally, the property features off-road parking at the front, ensuring convenience for residents and visitors alike. Its secluded location at the end of a no-through road enhances the sense of privacy and tranquillity, making it an ideal setting for families seeking a peaceful environment.

Moreover, this home holds significant potential for expansion, as it can be extended in line with neighbouring properties, subject to obtaining the necessary planning permissions. This flexibility allows you to tailor the home to your specific needs and preferences, making it a truly versatile investment.

In summary, this delightful family home in Datchet offers a rare combination of space, potential, and a serene location. Whether you are looking to settle down or invest, this property is a must-see.

### **Council Tax Band D**

#### **Legal Note.**

\*\*\*Although these particulars are thought to be materially correct, their accuracy cannot be guaranteed and they do not form part of any contract\*\*\*.





# Lawn Close Datchet

Approximate Gross Internal Floor Area = 90.3 sq m / 973 sq ft

Outbuilding Area = 3.9 sq m / 43 sq ft

Total Area = 94.2 sq m / 1016 sq ft

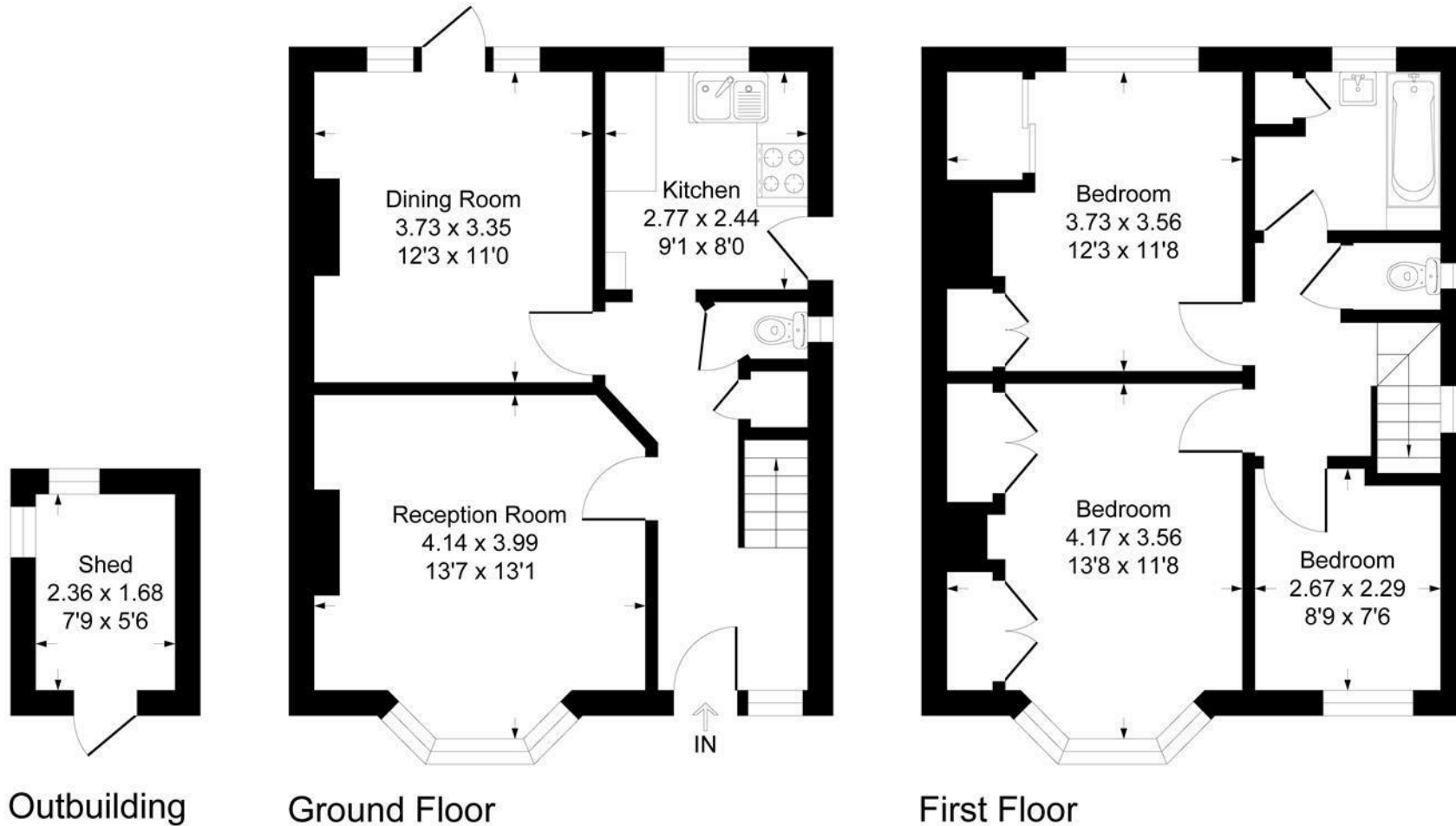


Illustration for identification purposes only, measurements are approximate, not to scale.

Produced By Esjay Property Marketing